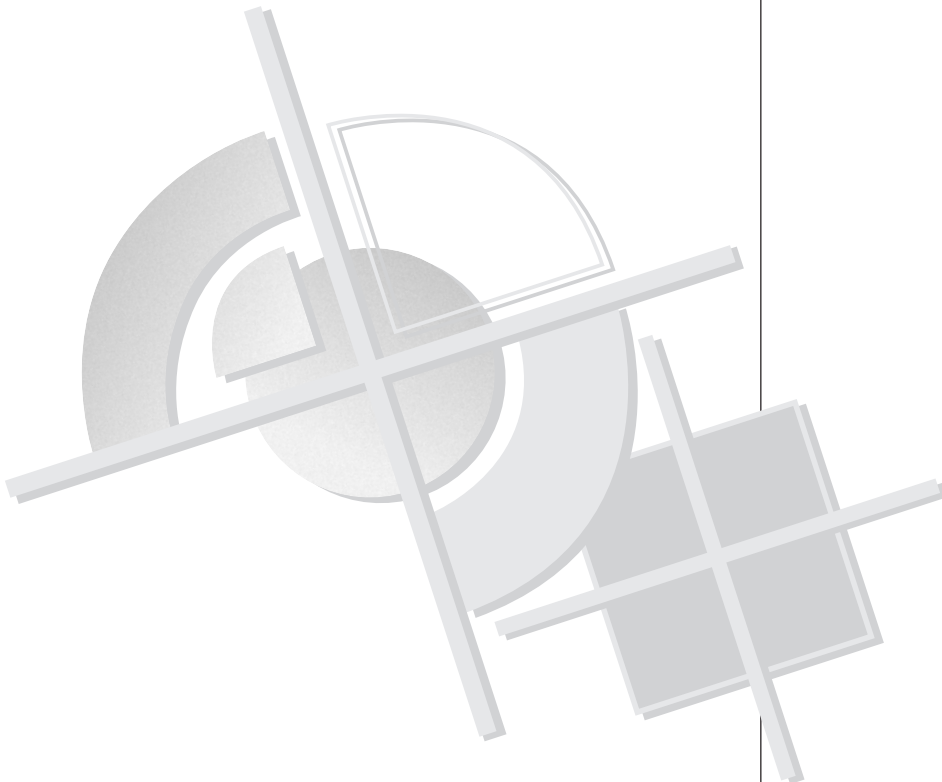


Creating PostScript Files
**CoreDRAW 6.0
for Windows 95**

For *Preps* to accept a CoreDRAW 6.0 illustration as a source file, you must export the illustration as an Encapsulated PostScript (EPS) file.

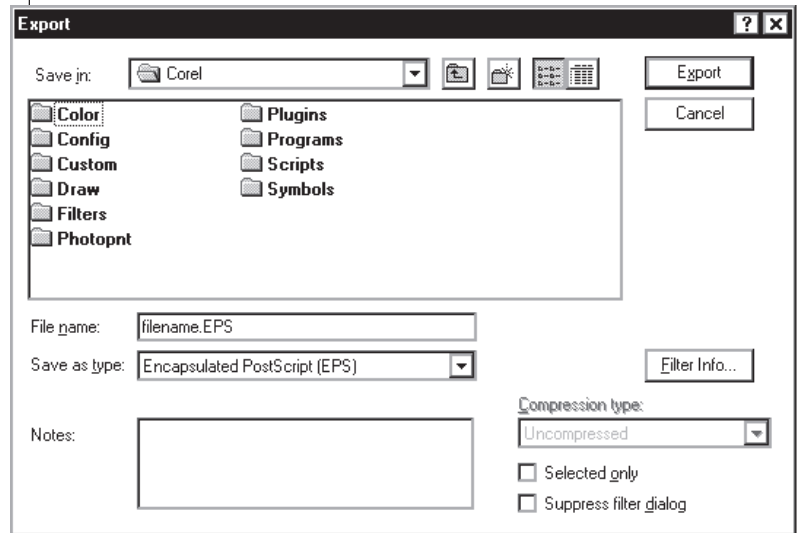
EPS files that are created from CoreDRAW 6.0 documents can contain CMYK and spot colors, and OPI links.



EXPORTING COREL DRAW FILES

To export a CorelDRAW illustration:

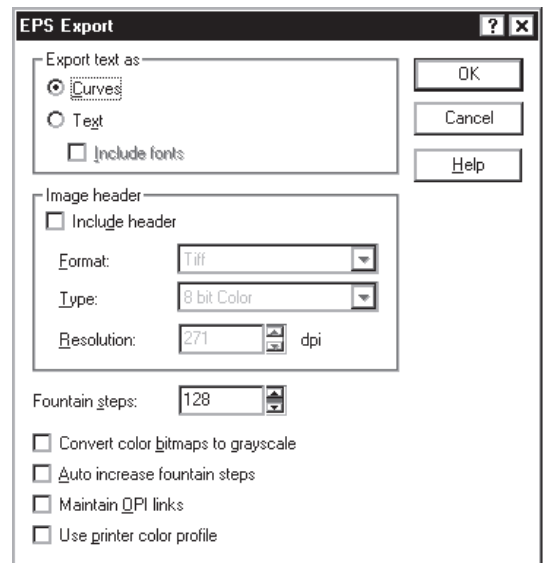
- ▶ From the *File* menu, choose *Export*.
- ▶ In the *Export* dialog box, in the *Save in* list, select the location in which you want to save the EPS file.
- ▶ In the *File name* box, type a file name.
- ▶ From the *Save as type* list, select *Encapsulated PostScript (EPS)*.
- ▶ Clear the *Selected only* check box.
- ▶ Clear the *Suppress filter dialog* check box.
- ▶ Choose *Export*.



To select EPS export options:

- ▶ In the *EPS Export* dialog box, select the *Curves* option button in the *Export text as* area.
- ▶ In the *Image header* area, clear the *Include header* check box.
- ▶ Clear all other check boxes.
- ▶ Choose *OK*.

You have created an EPS file from a CorelDRAW 6.0 document that you can add to *Preps* as a source file.



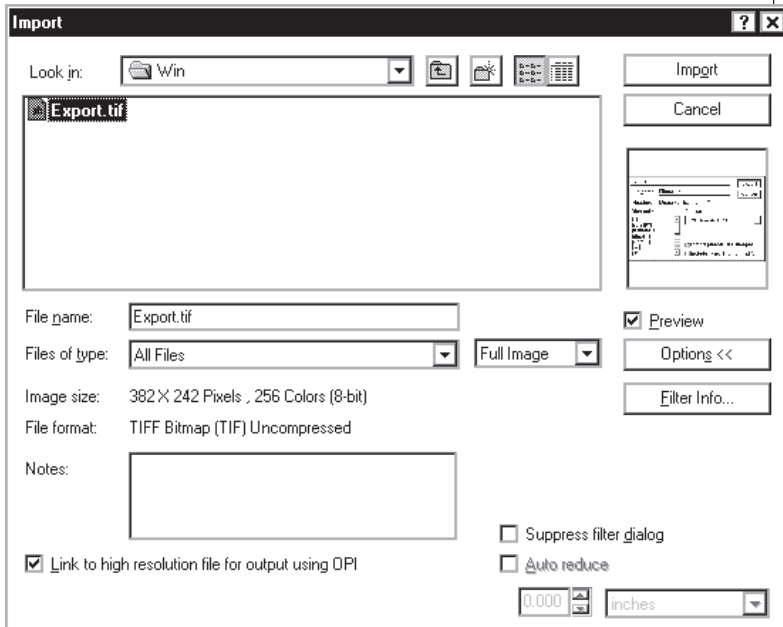
OPI LINKING OPTIONS USING CORELDRAW 6.0

When you include TIFF images in a CorelDRAW illustration, you have the option of also including OPI links for the images.

OPI links are PostScript references to the high-resolution data, not the high-resolution data itself. Without the high-resolution data, the resulting PostScript file is smaller, and the time it takes to write the PostScript file is significantly reduced. Once added to *Preps XL* or *Preps Pro*, the high-resolution data can be merged back into the output stream.

To choose OPI linking options when importing images:

- ▶ From the *File* menu, choose *Import*.
- ▶ In the *Import* dialog box, select the TIFF file you want to import into your CorelDRAW 6.0 document.
- ▶ Select the *Link to high resolution file for output using OPI* check box.
- ▶ Choose the *Import* button.



To choose OPI linking options when exporting images:

- ▶ From the *File* menu, choose *Export*.
- ▶ In the *Export* dialog box, choose the *Export* button.
- ▶ In the *EPS Export* dialog box, select the *Maintain OPI links* check box.
- ▶ Choose *OK*.

NOTE:

If there are no OPI images in your CorelDRAW document, the *Maintain OPI Links* check box is not available when you export the file.

