

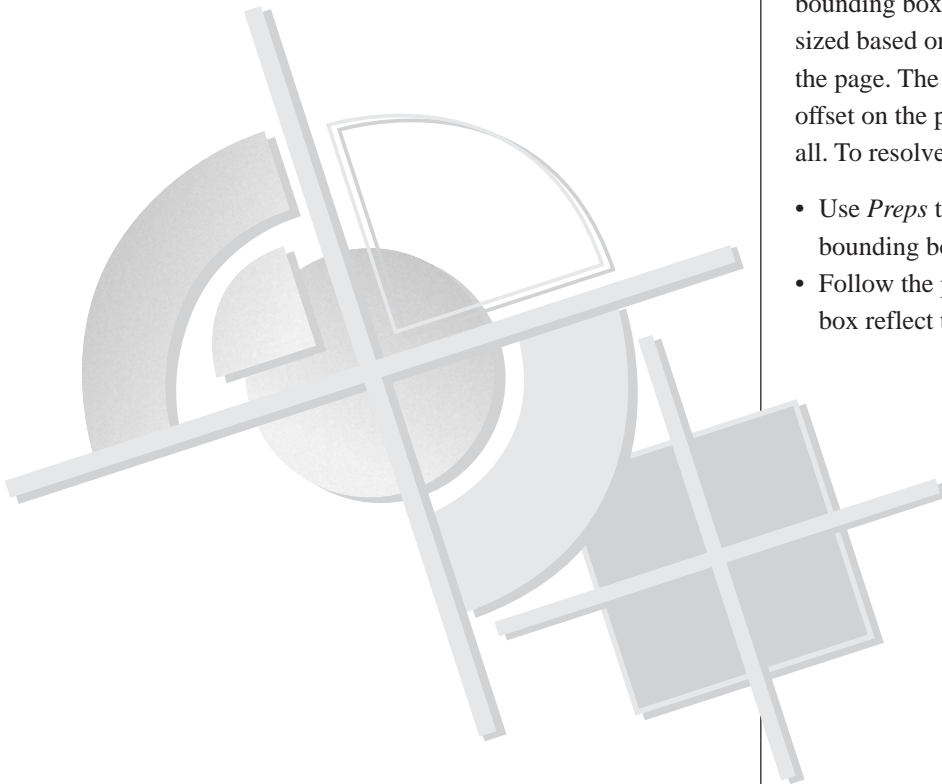
Creating PostScript Files **Macromedia FreeHand 7.0 for the Macintosh**

In order for *Preps* to accept Macromedia FreeHand 7.0 documents as source files, they must be saved as Encapsulated PostScript (EPS) files.

EPS files that are created from FreeHand documents can contain CMYK and spot colors, and OPI links. In addition, FreeHand creates a separate EPS file for each page within the file. For example, when you export a three-page FreeHand file, three EPS files are created: one for each FreeHand page.

Each EPS file contains information about the image's bounding box size. In FreeHand, bounding boxes are sized based on the area occupied by the elements on the page. The imposed image, therefore, may be offset on the page or may not appear on the page at all. To resolve this problem, you have two choices:

- Use *Preps* to apply page offsets to compensate for bounding box errors
- Follow the procedure that will make the bounding box reflect the page size

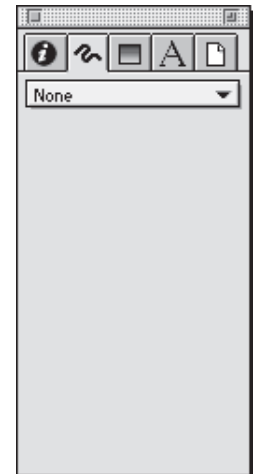
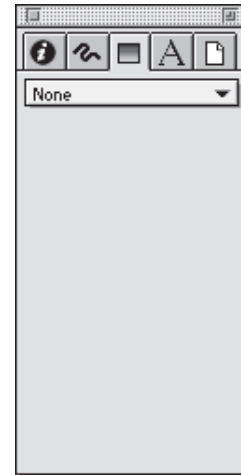
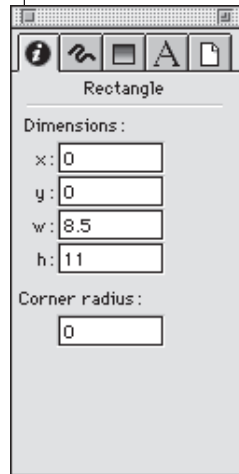


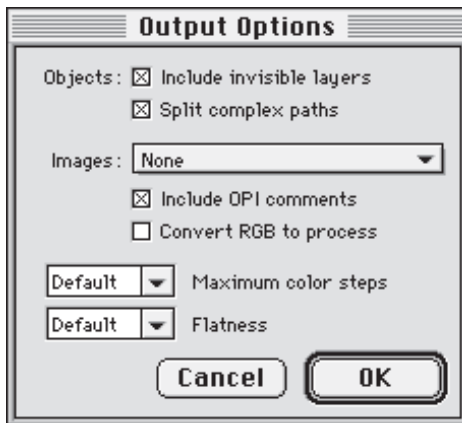
Making the bounding box reflect page size

- ▶ Draw a box that is the same trim size and in the same position as the FreeHand page. For example, if the FreeHand page is 8.5" x 11", then draw a box that is 8.5" x 11".
- ▶ Select the box.
- ▶ From the *Inspector* palette, choose the **Group** icon.
- ▶ In the *w* and *h* boxes, check to make sure that the box dimensions match the page dimensions. You can also type the page dimensions in the *w* and *h* boxes using the *Inspector* palette.
- ▶ From the *Inspector* palette, choose the **Fill** icon.
- ▶ From the fill list, select *None*.
- ▶ From the *Inspector* palette, choose the **Line** icon.
- ▶ From the line type list, select *None*.

Note:

A problem with FreeHand EPS files is that bounding box dimensions are always rounded to a whole number of Adobe points. This can result in small page positioning errors. To avoid this problem, you should use FreeHand's snap-to-grid feature to position and size pages, based on a grid increment set to a whole number of points. For example, use a grid increment of 1/8th inch (9.0 pts) instead of 1/10th inch (7.2 pts).

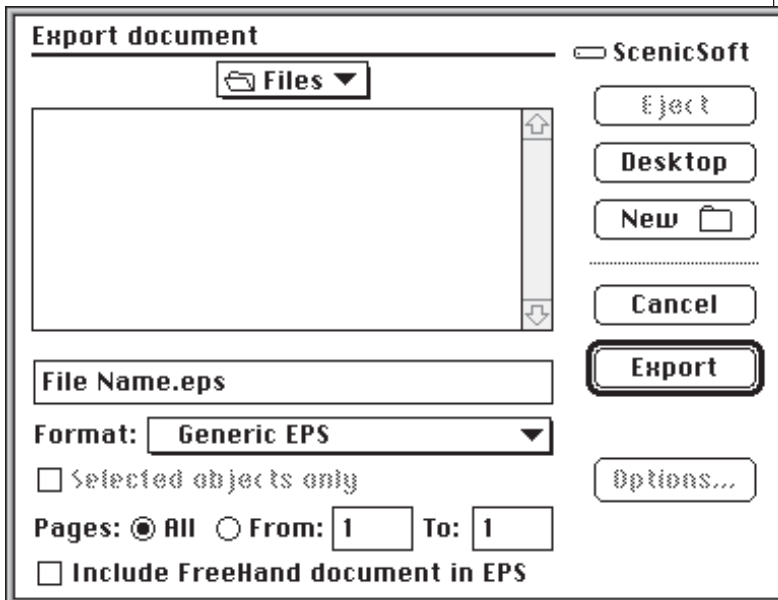




NAMING AND SAVING THE EPS FILE

To select output options:

- ▶ From the *File* menu, choose *Output Options*.
- ▶ From the *Images* list, select *ASCII* or *Binary* to include images. Select *None* if the graphics option specified by your print vendor is “omit images.” To ensure compatibility between computer platforms, ASCII is recommended. Some Windows configurations will not accept binary data.
- ▶ Select *Include OPI comments*.
- ▶ Select *Convert RGB to process* if you have chosen ASCII or Binary for images and there are RGB TIFF images in your file.
- ▶ Choose *OK*.



To export an EPS file:

- ▶ From the *File* menu, choose *Export*.
- ▶ Select the location in which you want to save the PostScript file.
- ▶ Enter a name.
- ▶ From the *Format* list, select *Generic EPS*.
- ▶ Select the number of pages you want to save.
- ▶ Clear the *Include FreeHand document in EPS* check box. This option increases the size of the EPS file and does not affect the image. Some output devices generate errors if the document is included.
- ▶ Choose *OK*.

An EPS file has been created for each FreeHand 7.0 page and can be added to *Preps* a source file.